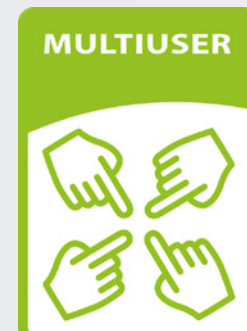


**POLARIS**

## SEMI-TRANSPARENT T-OLED TOUCHSCREENS

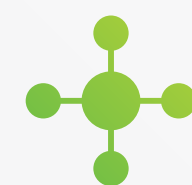


Any duplication, publication or any other transfer of this document and the information contained therein to third parties is not permitted.

Illustrations and contents are subject to alterations and errors.

The [General Terms and Conditions \(GTC\)](#) and [AppStore GTC](#) of **eyefactive GmbH** apply.





## INNOVATIVE PRESENTATION

Combine physical products with digital information.



## MULTITOUCH INTERACTION

10 touch points for true multi-touch interaction.



## HIGH-RESOLUTION DISPLAY

HD for crystal-clear visualization.



## CUSTOMIZABLE APPS

Available via eyefactive's touchscreen app platform.





POLARIS

SEMI-TRANSPARENT T-OLED TOUCHSCREENS



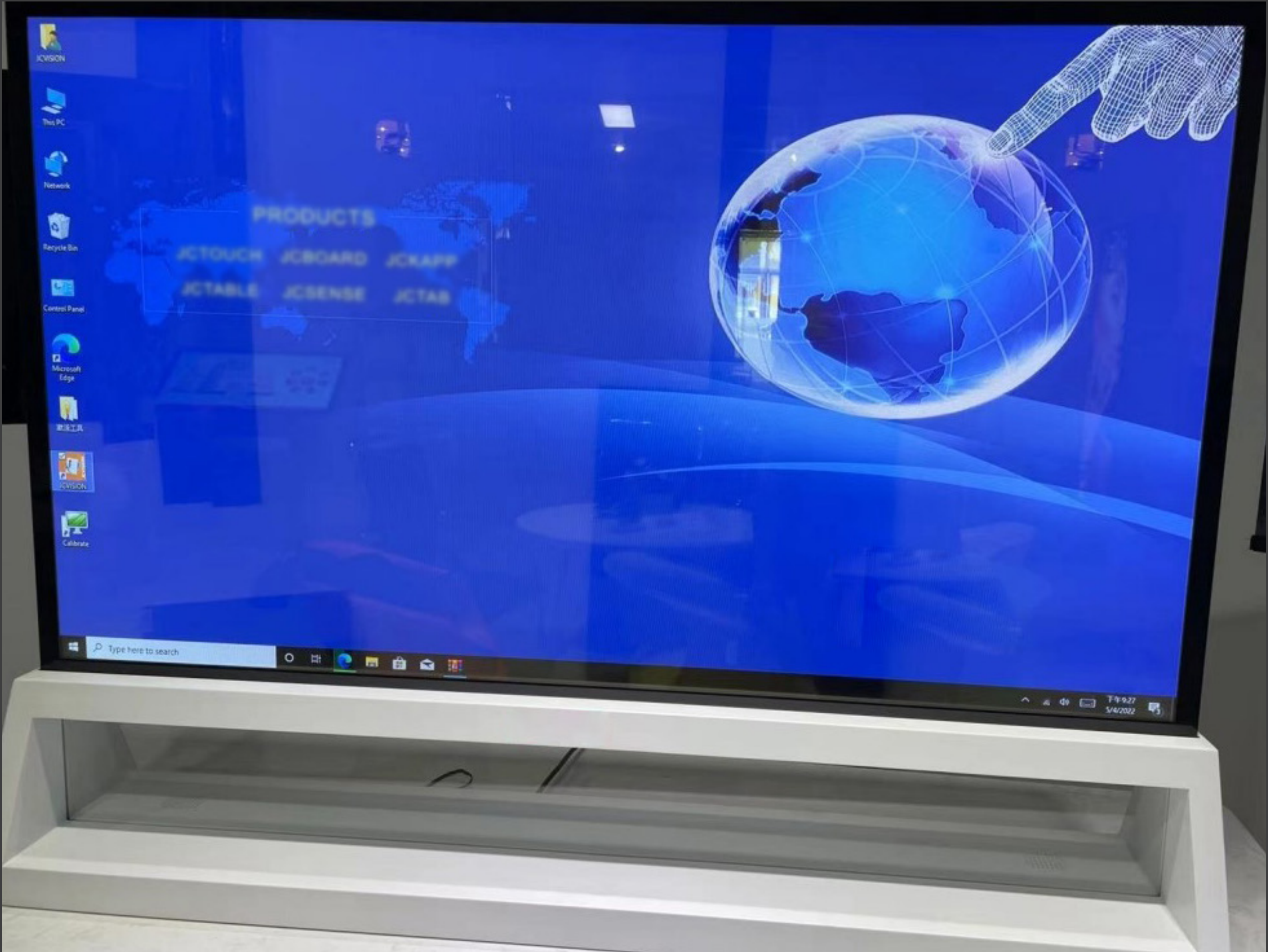
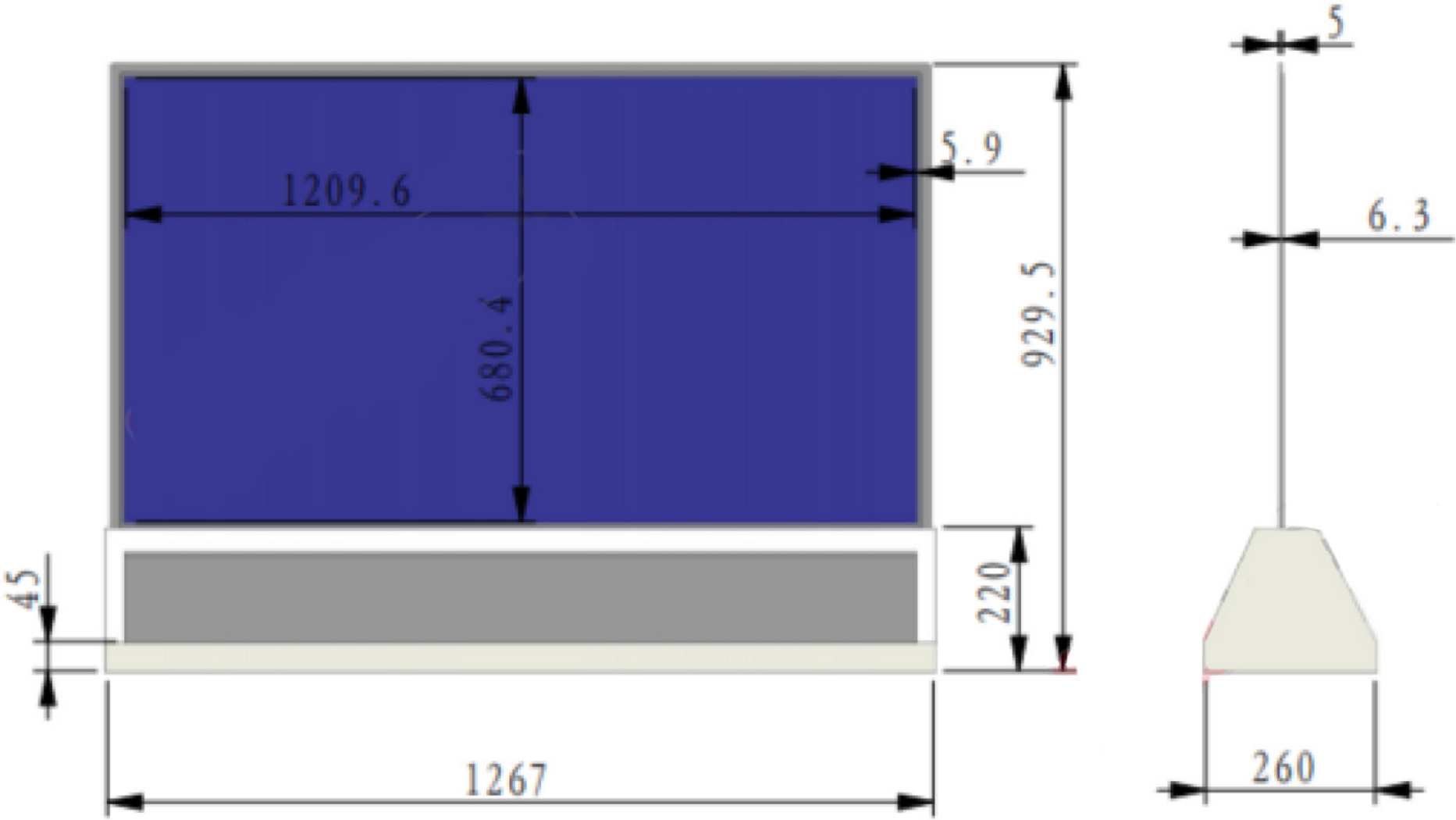
POLARIS FREE 55"



POLARIS STELE 55"

POLARIS	MODEL	POLARIS 55" FREE	POLARIS 55" STELE
	Net Weight	20kg	55kg
	Dimension (L x W x H)	1267 x 929,5 x 260mm	797 x 1850 x 480mm
	Resolution	1920 x 1080px	1920 x 1080px
	Brightness	400 cd/m²	400 cd/m²
	Display Area	1209,6 x 680,4mm	680,4 x 1209,6mm
	Contrast	1200:1	1200:1
	Operating temperature	0°C - 40°C	0°C - 40°C
	Display Color	16.7M	16.7M
	Aspect Ratio	16:9	9:16
MEDIAPLAYER	Medioplayer	Ultra-compact M	Ultra-compact M
	OS	Windows 10 IoT	Windows 10 IoT
TOUCH	Touch Technology	PCAP	PCAP
	Touch Points	10	10
POWER	Input Voltage	100-240V	100-240V
	Power	192W	192W

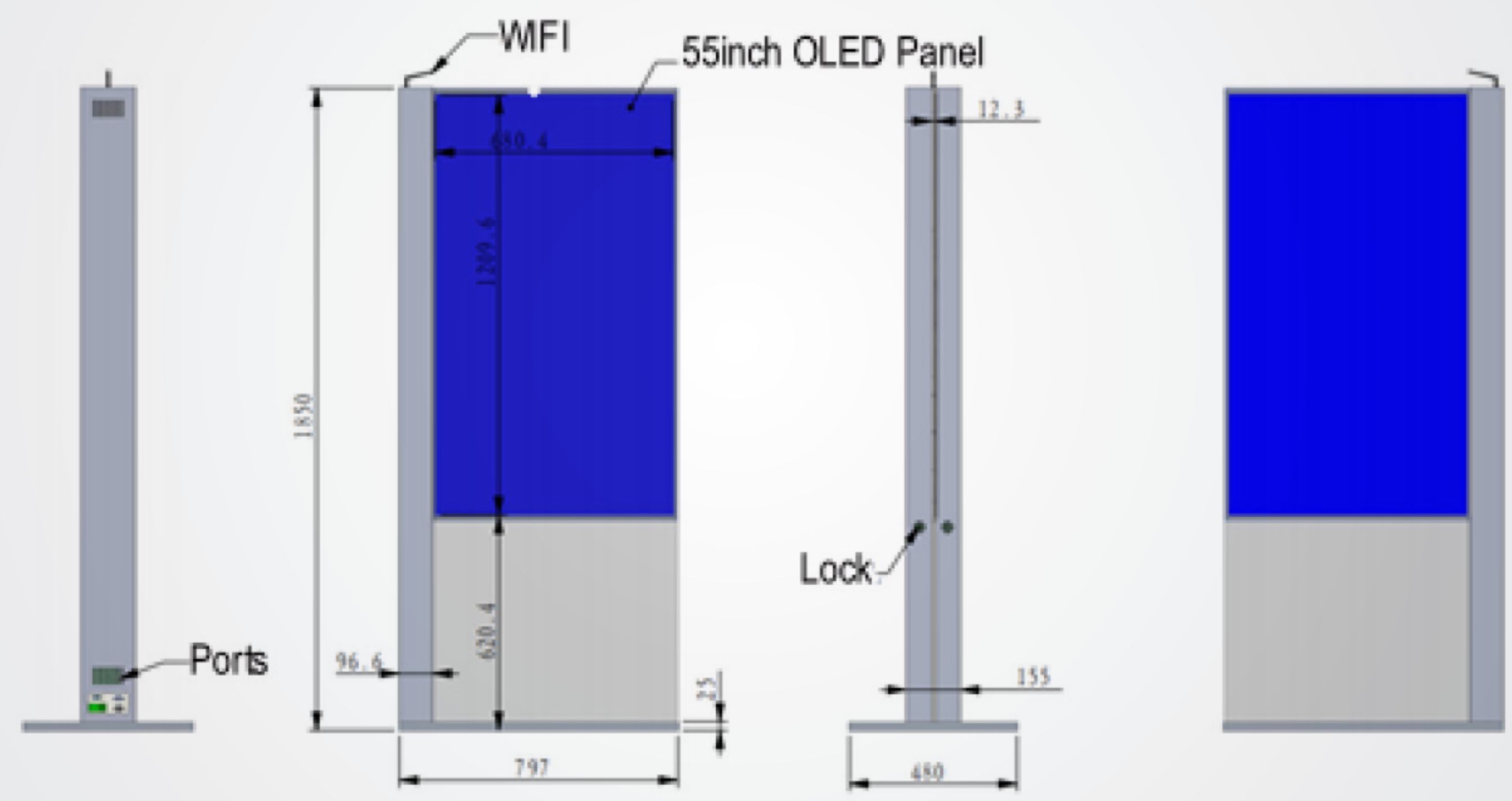
POLARIS - FREE 55"

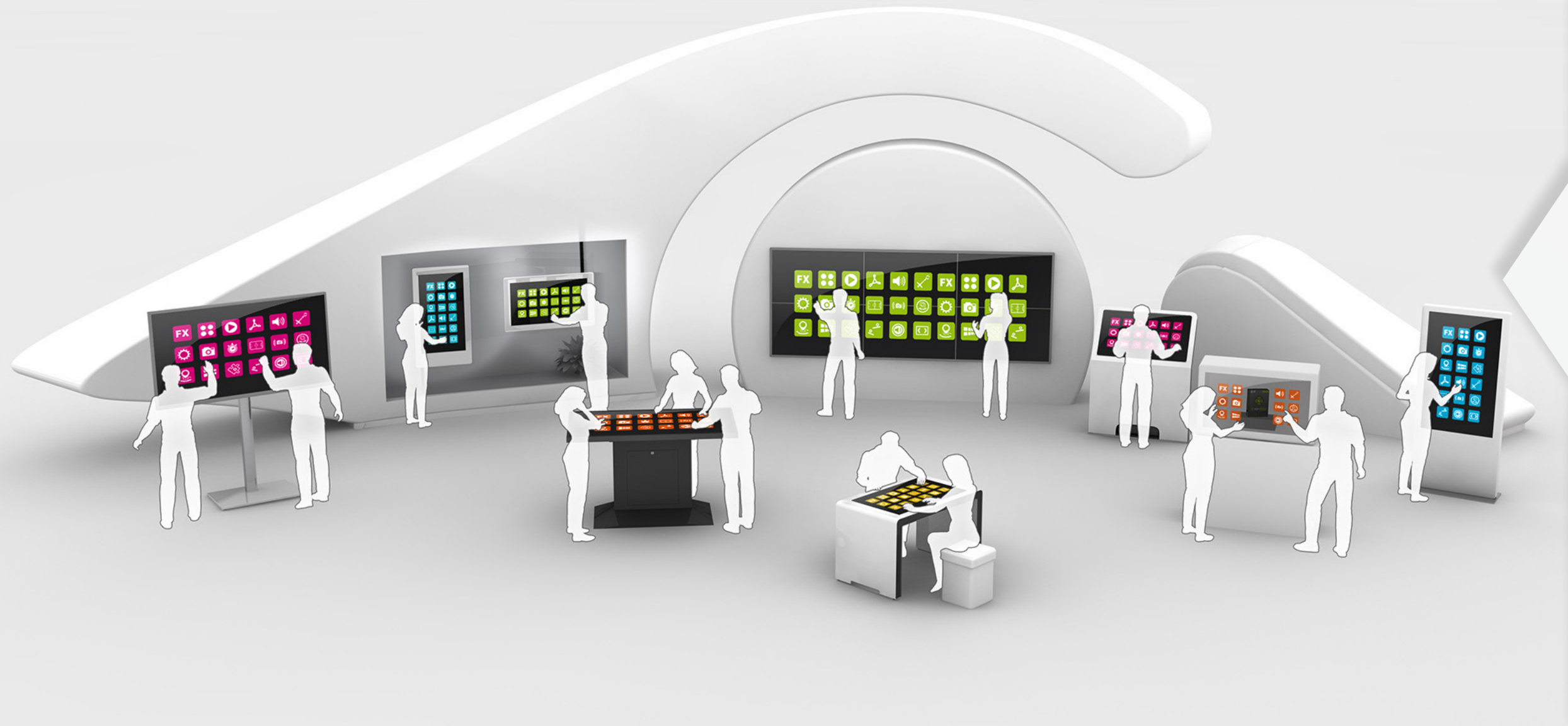






POLARIS - STELE 55"





## B2B TOUCHSCREEN APP PLATFORM

Every touchscreen hardware needs a corresponding software to make optimal use of the advantages of large interactive displays. With the **eyefactive app store**, a whole platform with *customizable*, *ready-to-use* apps for all touchscreen systems is available.

 [multitouch-appstore.com](http://multitouch-appstore.com)

- ✓ **APPSTORE** A growing number of ready-to-use, customizable apps in the world's first B2B marketplace.
- ✓ **APPSUITE** Content management software as the central operating system, connects to AppStore.
- ✓ **APPCLOUD** Cloud management of all systems and projects. Roll-outs of any size can be easily deployed.
- ✓ **APPSDK** All apps are based on eyefactive's multi-awarded multi-user software technology.







## FREE CONSULTATION

Get free professional consultation for your next interactive signage project.

 [CONTACT US](#)

## TOUCHSCREEN SOLUTIONS XXL

Find out more about our innovative technologies and solutions.

 [eyefactive.com](http://eyefactive.com)







TOUCH FUTURE. *TOGETHER.*



 CONTACT US