

TAURUS

MULTITOUCH-SCREEN-TABLE



- MULTITOUCH TECHNOLOGY**
- MULTIUSER**
- OBJECT RECOGNITION**
- APP STORE**
- OPERATING HOURS**

Any duplication, publication or any other transfer of this document and the information contained therein to third parties is not permitted.

Illustrations and contents are subject to alterations and errors.

The [General Terms and Conditions \(GTC\)](#) and [AppStore GTC](#) of [eyefactive GmbH](#) apply.



HIGH-RESOLUTION SCREENS

HD / UHD for crystal-clear visualization.



MULTITOUCH INTERACTION

Up to 40 touch points for true multitouch interaction.



INNOVATIVE OBJECT RECOGNITION

Connect the physical with the digital world.



CUSTOMIZABLE APPS

Available via eyefactive's touchscreen app platform.



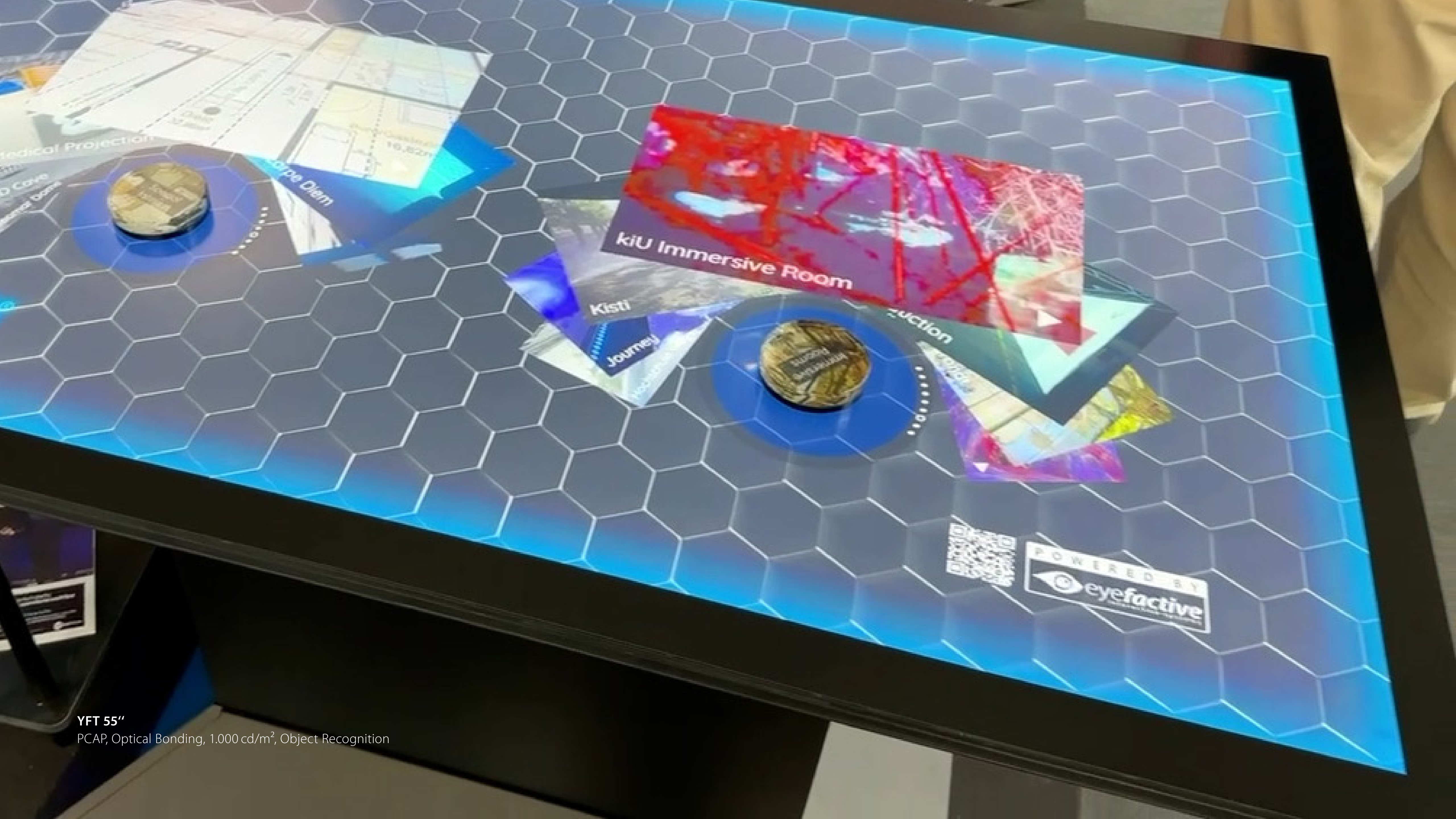
MULTITOUCH TABLE TAURUS: OVERVIEW

PCAP

| Model | YFT | XSP | XMT | XII |
|--------------------|--|--|--|--|
| Technology | PCAP | PCAP | PCAP | PCAP |
| Category | Premium | Premium | Budget | Budget |
| Sizes (inches) | 55 | 70 | 43 / 49 / 55 / 65 | 55 / 65 |
| Resolution | UHD | UHD | UHD | UHD |
| Brightness | 1.000 cd/m ² | 300 cd/m ² | 360 - 450 cd/m ² | 420 cd/m ² |
| Material / Colors | Steel Dc01 / RAL 9005 fine structure, matt | Steel Dc01 / RAL 9005 fine structure, matt | Steel Dc01 / RAL 9005 fine structure, matt | Steel Dc01 / RAL 9005 fine structure, matt |
| Touch Points | 40 | 30 | 40 | 12 - 15 |
| Face Up (Table) | ✓ | ✓ | ✓ | ✓ |
| Object Recognition | ✓ | ✓ | - | - |

IR

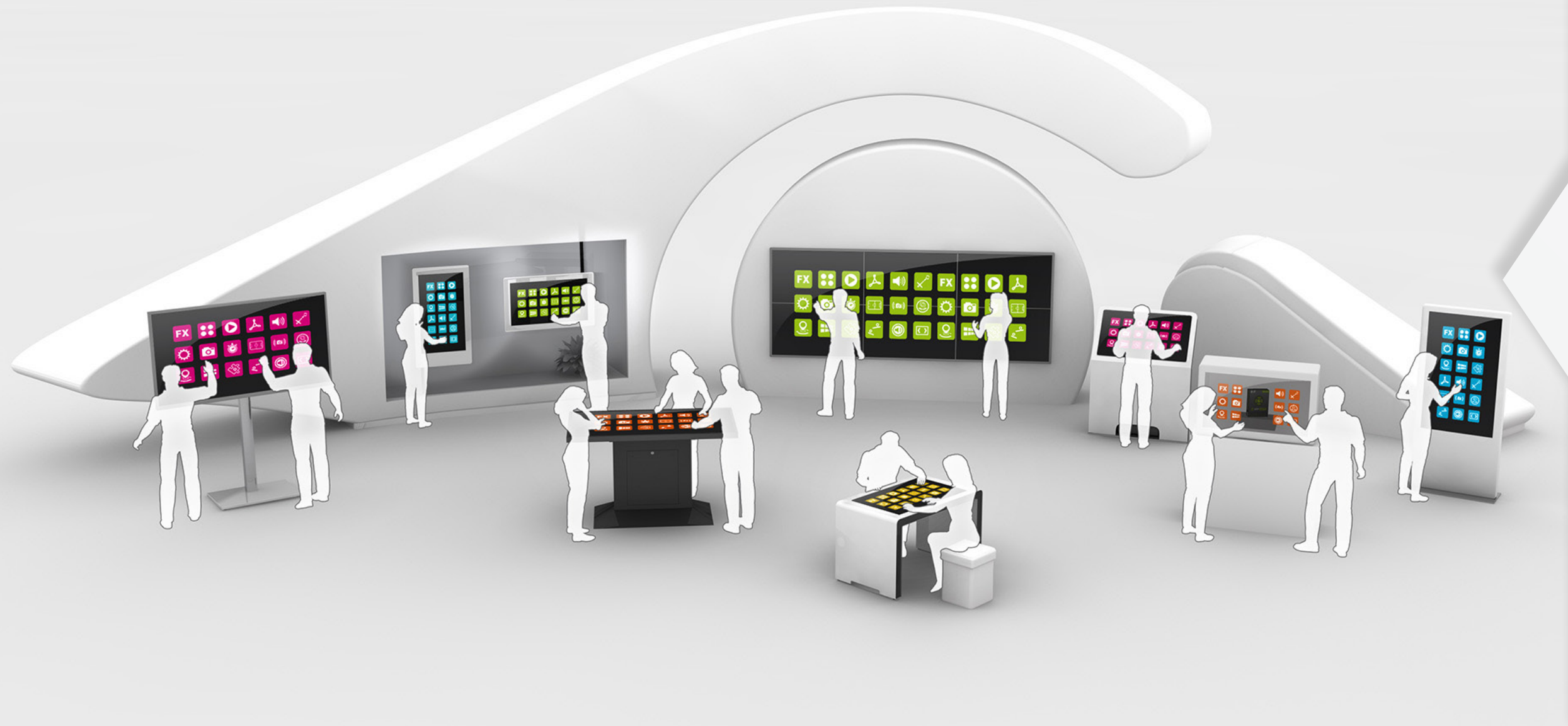
| Model | XES |
|--------------------|---|
| Technology | Slim-IR |
| Category | Premium |
| Sizes (inches) | 43 / 55 / 75 / 86 / 98 |
| Resolution | UHD |
| Brightness | 475 cd/m ² |
| Touch Points | 12 - 32 |
| Material / Colors | Steel Dc01/ RAL 9005 fine structure, matt |
| Face Up (Table) | ✓ |
| Object Recognition | ✓ |



YFT 55"
PCAP, Optical Bonding, 1.000 cd/m², Object Recognition



XMT 55"
PCAP, 425 cd/m²



B2B TOUCHSCREEN APP PLATFORM

Every touchscreen hardware needs a corresponding software to make optimal use of the advantages of large interactive displays. With the **eyefactive app store**, a whole platform with *customizable, ready-to-use* apps for all touchscreen systems is available.

multitouch-appstore.com

- ✓ **APPSTORE** A growing number of ready-to-use, customizable apps in the world's first B2B app marketplace.
- ✓ **APPSUITE** Content management software as the central operating system, connects to AppStore.
- ✓ **APPCLOUD** Cloud management of all systems and projects. Roll-outs of any size can be easily deployed.
- ✓ **APPSDK** All apps are based on eyefactive's multi-awarded touchscreen software technology.





FREE CONSULTATION

Get free professional consultation for your next interactive signage project.

 [CONTACT US](#)

TOUCHSCREEN SOLUTIONS XXL

Find out more about our innovative technologies and solutions.

 eyefactive.com





TOUCH FUTURE. *TOGETHER.*



 CONTACT US