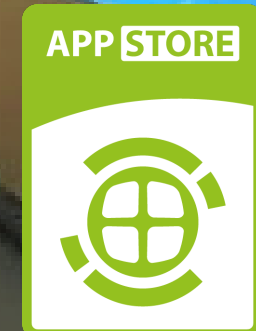


**MARS (YFT) BY EYEFACTIVE**

**HIGH-BRIGHTNESS PREMIUM TOUCHSCREENS**



Any duplication, publication or any other transfer of this document and the information contained therein to third parties is not permitted.

Illustrations and contents are subject to alterations and errors.

The [General Terms and Conditions \(GTC\)](#) and [AppStore GTC](#) of **eyefactive GmbH** apply.

# PCAP MULTITOUCH SCREENS **NEW**

Model MARS (YFT)



MARS 43"  
PCAP, Optical Bonding, 1.000 cd/m<sup>2</sup>, Object Recognition

# PCAP MULTITOUCH SCREENS

## Model MARS (YFT)

### Display

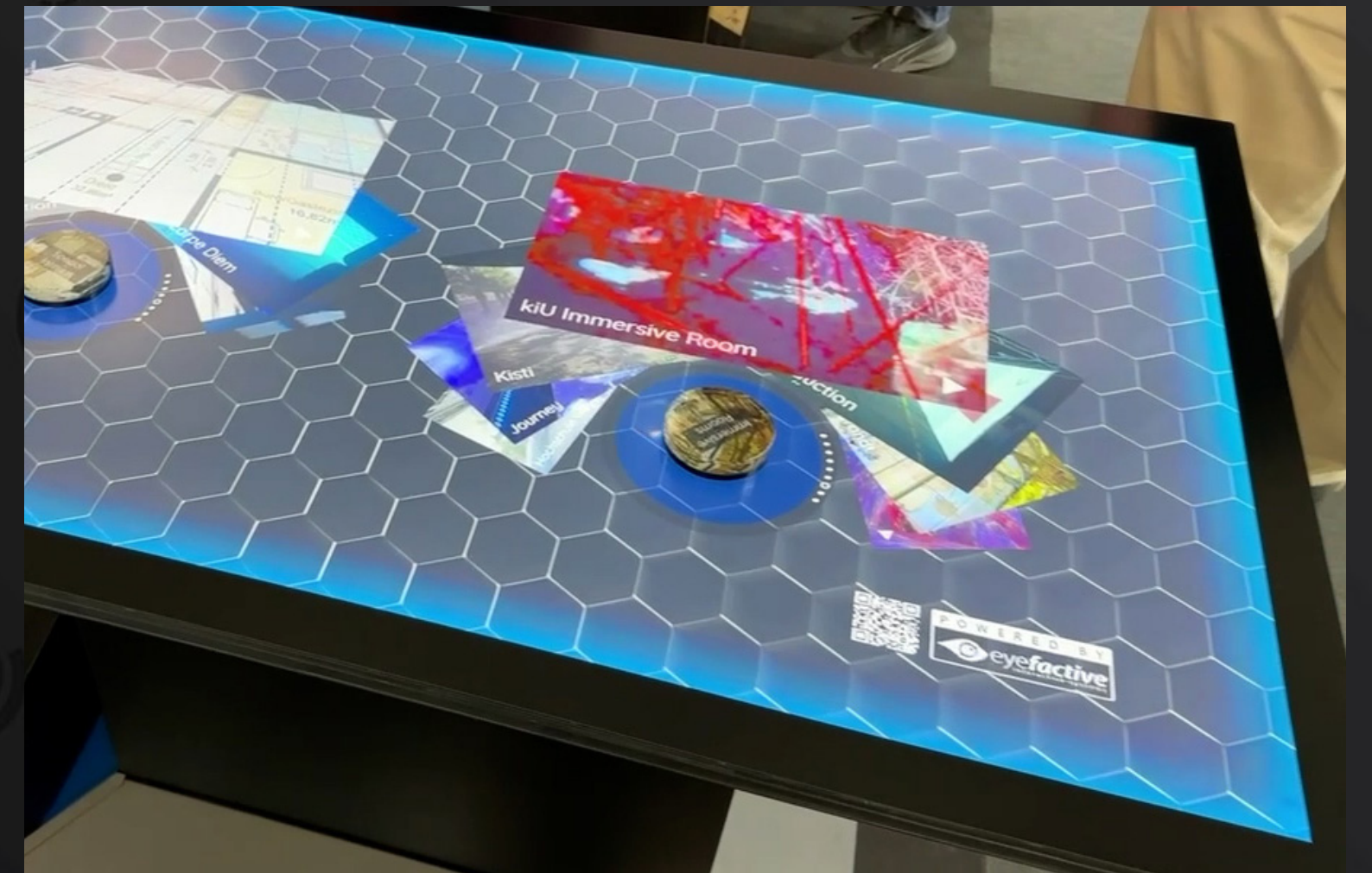
Model	43" UHD	55" UHD	65" UHD
Technology	PCAP	PCAP	PCAP
Resolution	UHD (3840 × 2160 px)	UHD (3840 × 2160 px)	UHD (3840 × 2160 px)
Type	LCD	LCD	LCD
Format	16:9	16:9	16:9
Brightness	1.000 cd/m <sup>2</sup>	1.000 cd/m <sup>2</sup>	1.000 cd/m <sup>2</sup>
Runtime	24/7	24/7	24/7
Dimensions	1021 x 608 x 60 mm	1.295 x 780 x 62 mm	1.514 x 930 x 63 mm
Weight	28 kg	45 kg	56 kg
Touch points	40	40	40
Technology	PCAP	PCAP	PCAP
Object recognition	✓	✓	✓
Face Up (Table)	✓	✓	✓
Audio	2 x 5 W	2 x 5 W	2 x 5 W
Power	100-240 VAC, 50/60Hz, 4.0A	100-240 VAC, 50/60Hz, 4.0A	100-240 VAC, 50/60Hz, 4.0A
Consumption	TBA	TBA	TBA
VESA	600 x 400	600 x 400	600 x 400

### Sensor

### Other

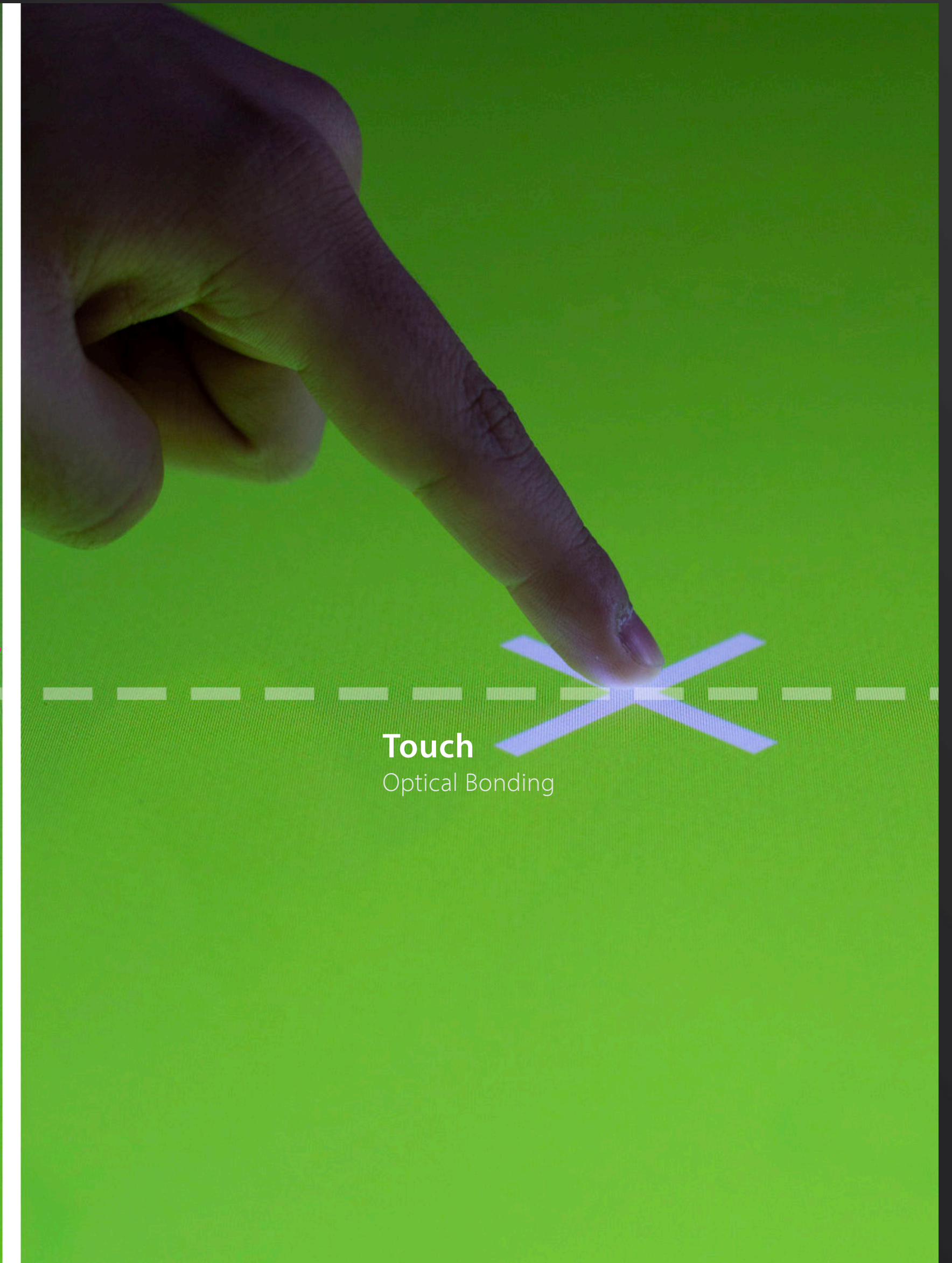
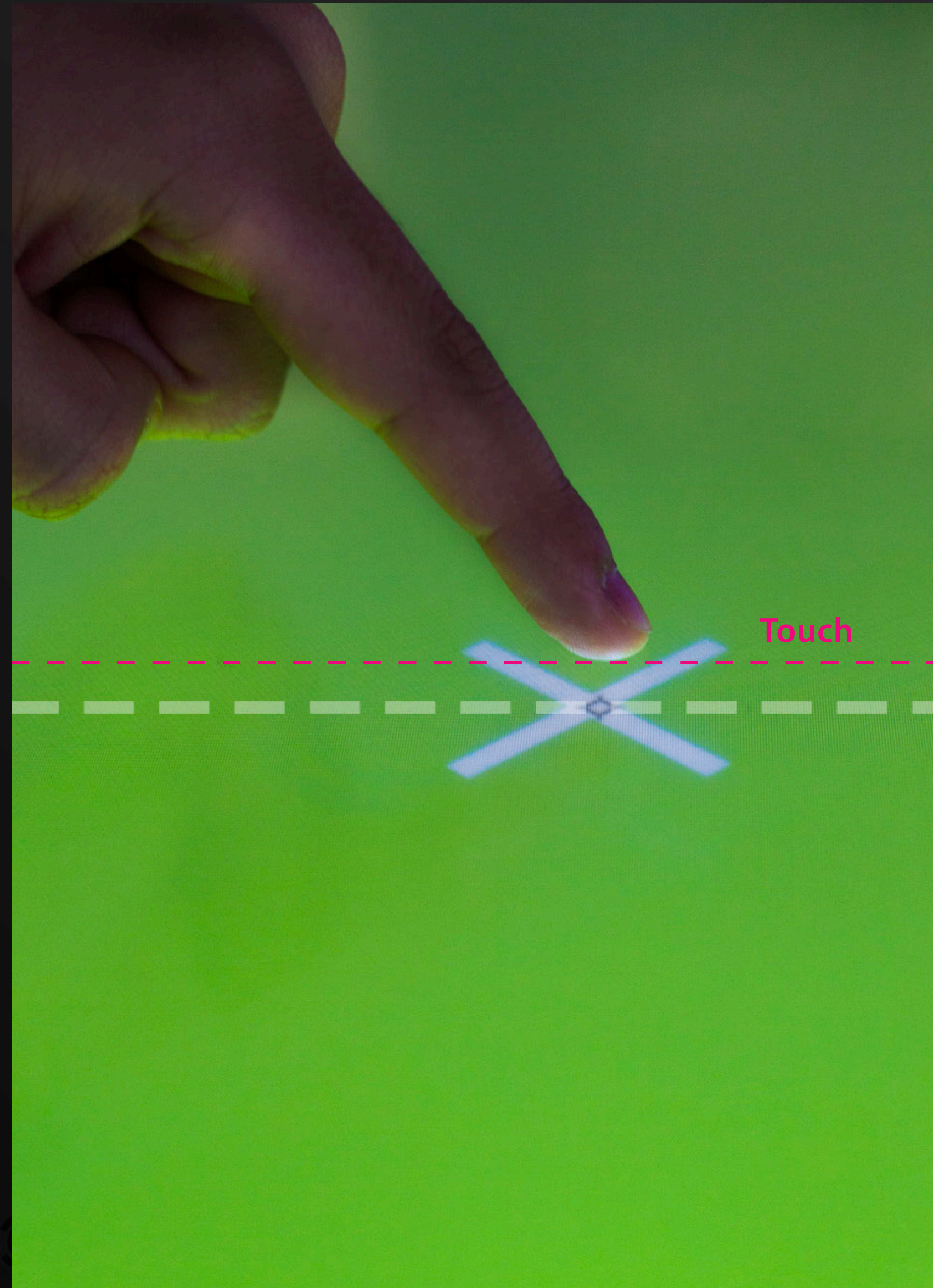
# Model MARS

Premium PCAP Touch Technology



# Model MARS

Optical Bonding



# Model MARS

Ultra-High Brightness



**450 cd/m<sup>3</sup>**  
Standard Brightness

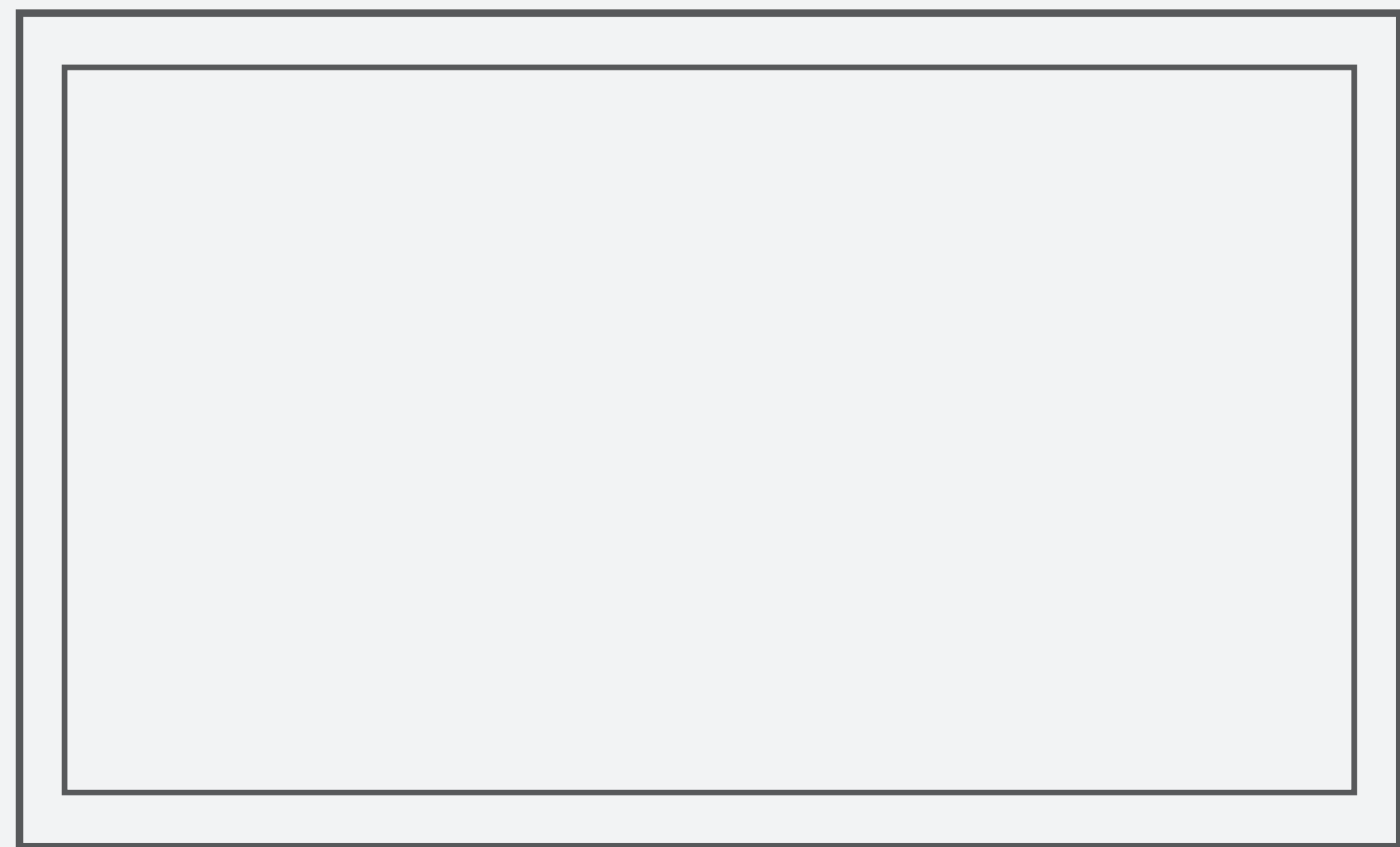


**1.000 cd/m<sup>3</sup>**  
Ultra-High Brightness



# PCAP MULTITOUCH SCREENS

Model MARS 43" (YFT)



942,2 mm

1021 mm



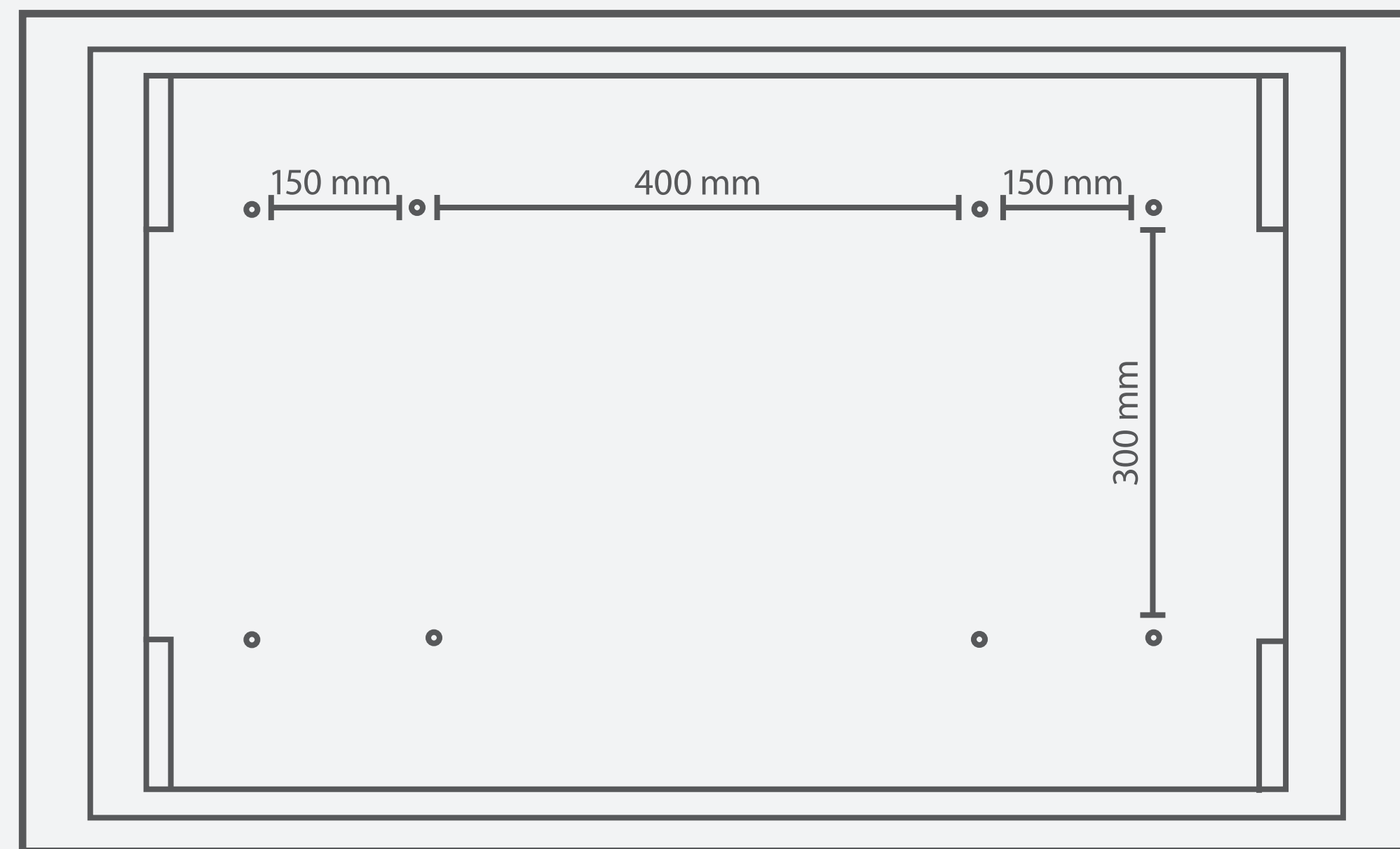
530,4 mm

608,5 mm

20,3 mm

59,8 mm

71,8 mm



150 mm

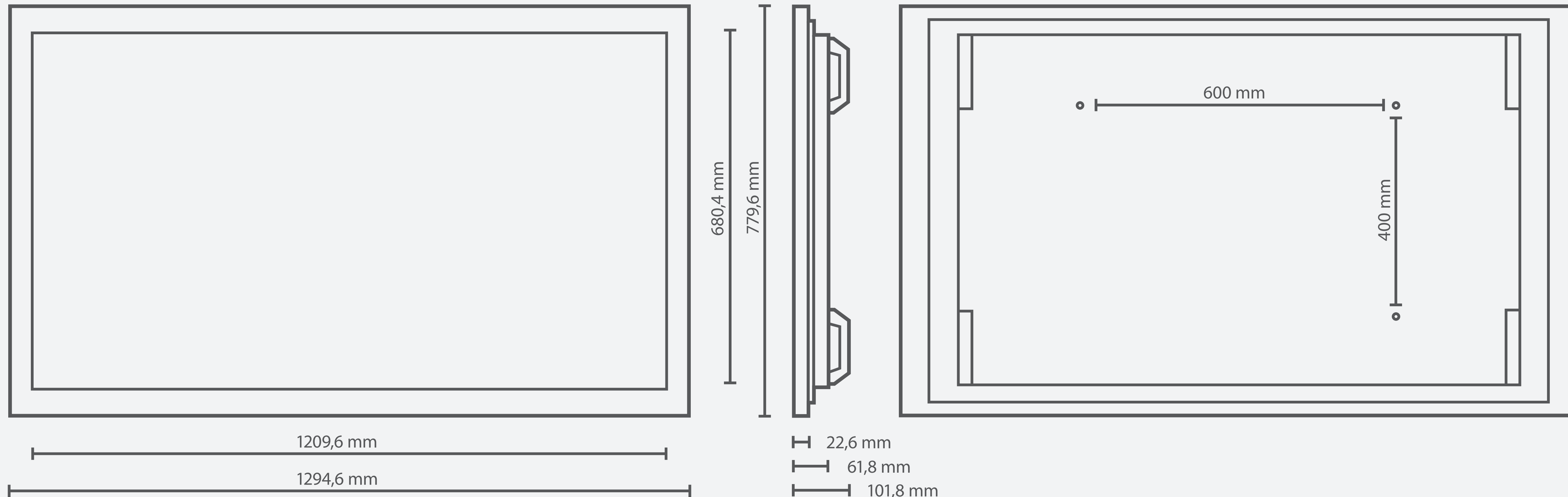
400 mm

150 mm

300 mm

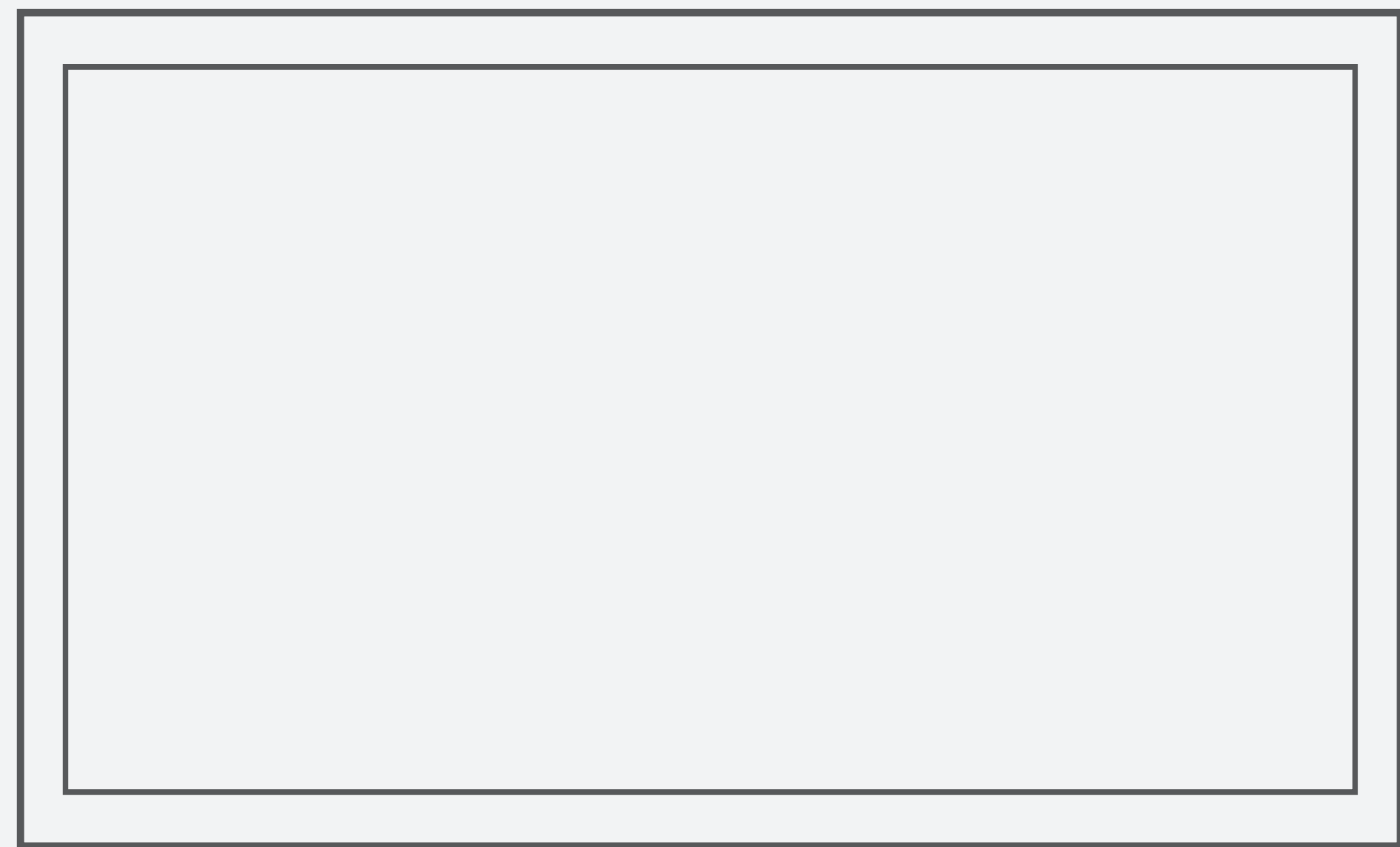
# PCAP MULTITOUCH SCREENS

Model MARS 55" (YFT)



# PCAP MULTITOUCH SCREENS

Model MARS 65" (YFT)



1428,5 mm

1513,5 mm



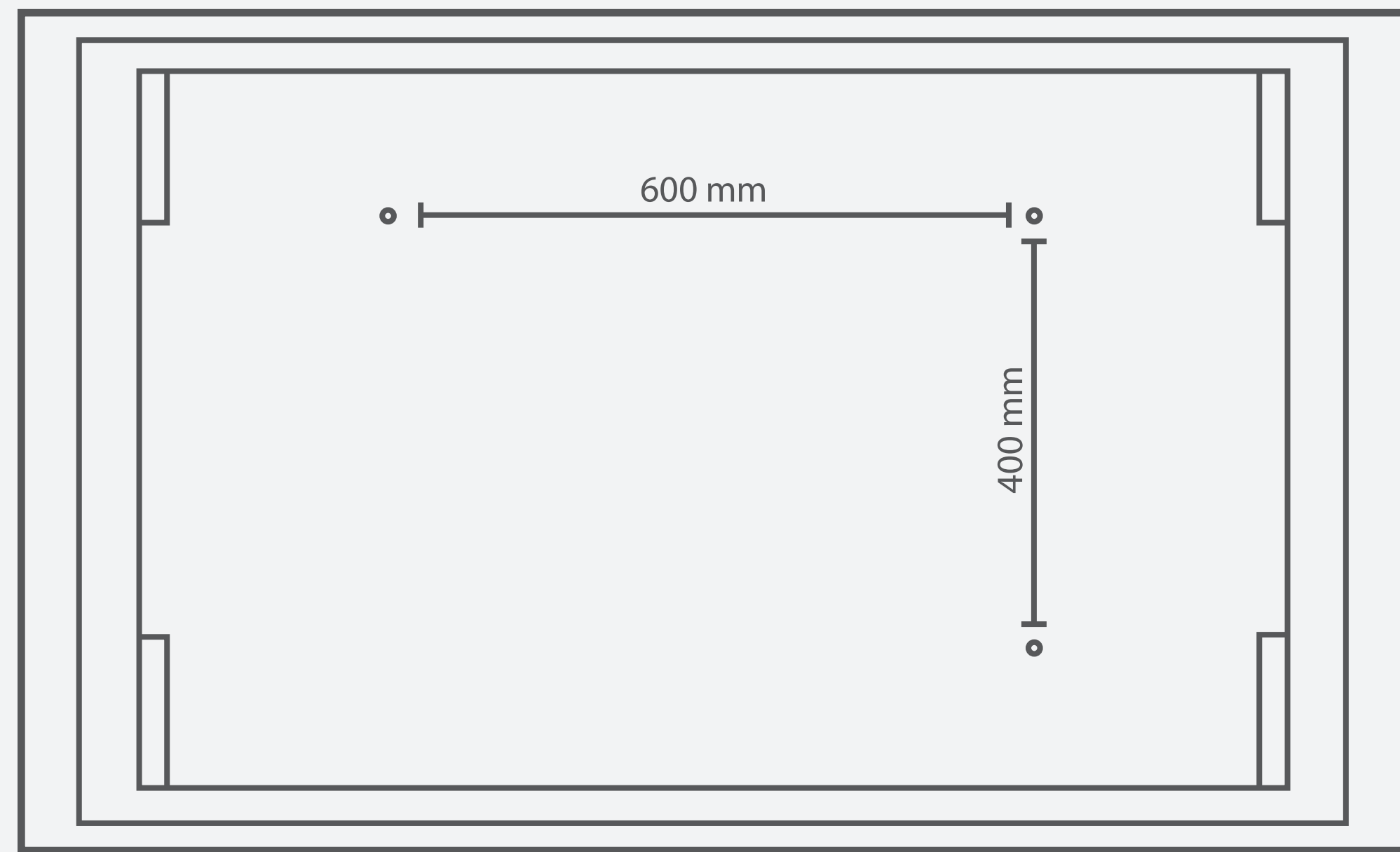
803,5 mm

930 mm

23,7 mm

62,9 mm

102,9 mm



600 mm

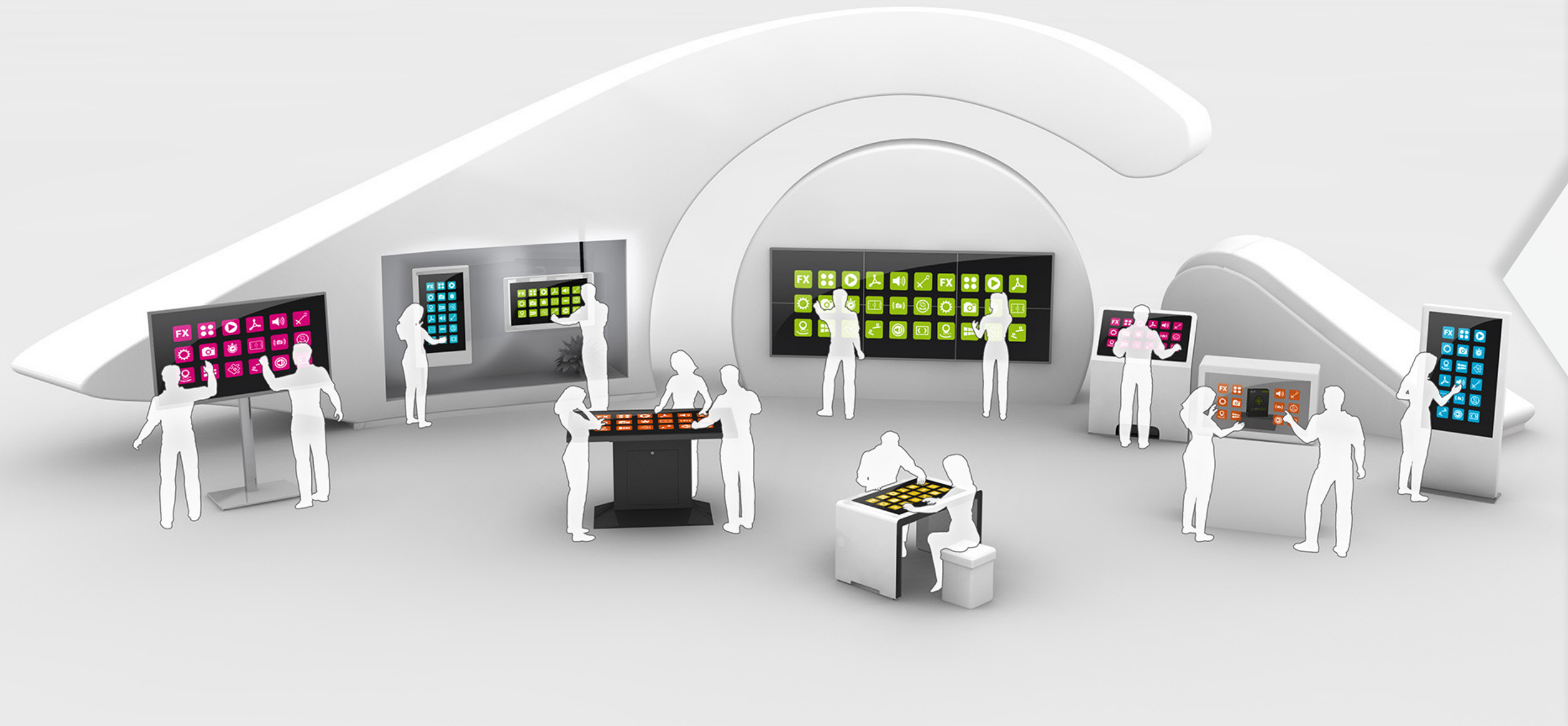
400 mm



## TOUCHSCREEN OBJECT RECOGNITION

Amaze customers with innovative object recognition on any touchscreen system: Products are magically recognized by the displays as soon as they are placed on the surface or held up to a screen.

 [LEARN MORE](#)



## B2B TOUCHSCREEN APP PLATFORM

Every touchscreen hardware needs a corresponding software to make optimal use of the advantages of large interactive displays. With the **eyefactive app store**, a whole platform with *customizable, ready-to-use* apps for all touchscreen systems is available.

 [multitouch-appstore.com](http://multitouch-appstore.com)

- ✓ **APPSTORE** A growing number of ready-to-use, customizable apps in the world's first B2B app marketplace.
- ✓ **APPSUITE** Content management software as the central operating system, connects to AppStore.
- ✓ **APPCLOUD** Cloud management of all systems and projects. Roll-outs of any size can be easily deployed.
- ✓ **APPSDK** All apps are based on eyefactive's multi-awarded touchscreen software technology.





## FREE CONSULTATION

Get free professional consultation for your next interactive signage project.

 CONTACT US

## TOUCHSCREEN SOLUTIONS XXL

Find out more about our innovative technologies and solutions.

 [eyefactive.com](http://eyefactive.com)





TOUCH FUTURE. *TOGETHER.*



 CONTACT US